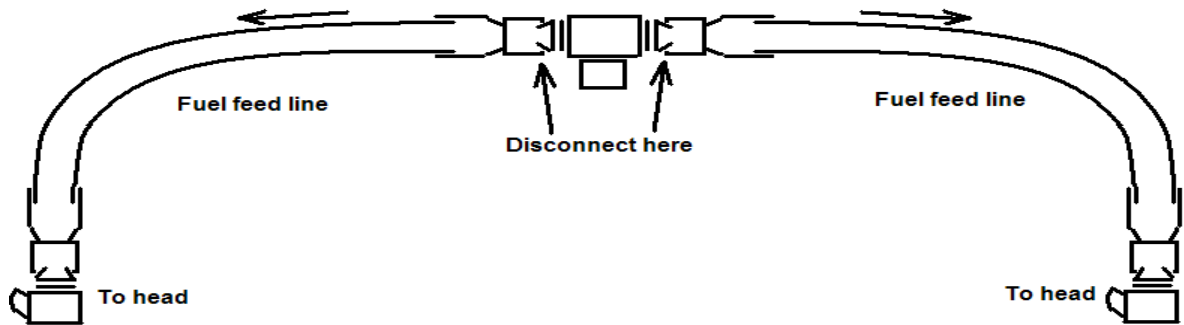
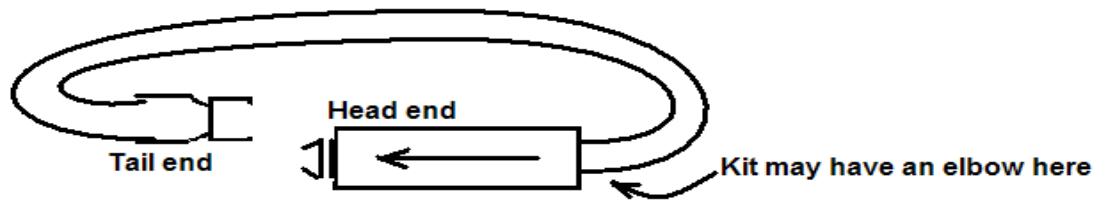


Cat C32 Marine Engine

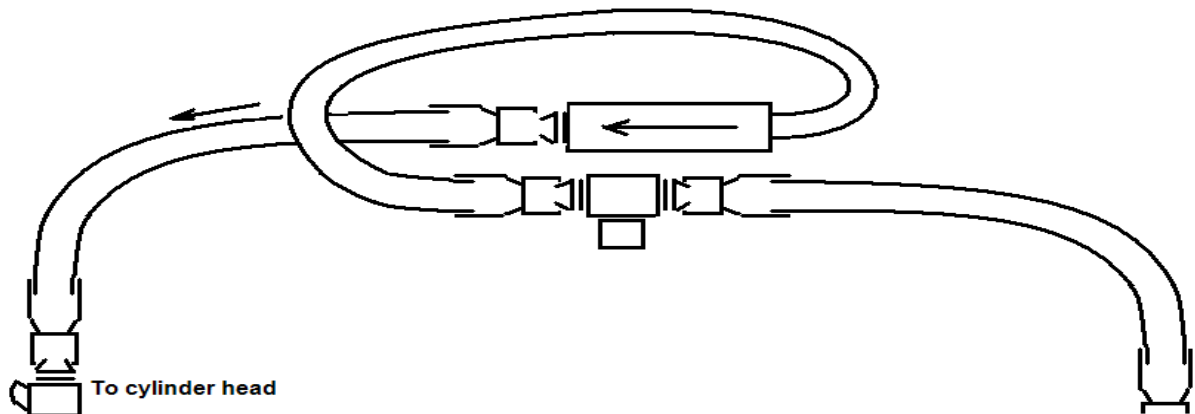
Original Engine Fuel Line Setup Viewed from front of engine



Tadger Kit



Installation



1. Disconnect fuel feed line as in diagram above on left side.
2. Connect head end of Tadger to end of fuel feed line. Hose part of kit may be above or below Tadger, whichever allows for best position to tie it off.
3. Attach tail end of Tadger kit to fitting where fuel feed line was disconnected.
4. Repeat for right side. Be sure arrow on Tadger has flow going towards head.
5. Tighten all connections.
6. Tie off in several places using heavy cable ties to minimize movement of Tadger.
7. If metal on metal, wrap Tadger kit with loom to avoid wear and damage.

Bill Tallman

Tadger Installation Team 519-643-8255 cell